

PEYTON THOMAS HOMES



263 BEARCLAW CIRCLE, ALEDO, TEXAS

NEWLY BUILT CUSTOM HOME OFFERED BY PEYTON THOMAS HOMES IN THE CLAIRE VISTA COMMUNITY WITH ACCESS TO THE HIGHLY SOUGHT AFTER ALEDO SCHOOLS. EXQUISITE ENTRY WITH HIGH CEILINGS AND ACCESS TO THE FORMAL DINING WITH BUTLER PANTRY AND STUDY WITH BUILT IN DESK AREA. THIS HOME PROVIDES AN OPEN CONCEPT LIVING SPACE WITH THE KITCHEN AND NOOK CONVENIENTLY LOCATED OFF THE FAMILY ROOM, WHICH HAS A BEAUTIFUL BRICK AND STONE CORNER FIREPLACE AND THE PERFECT SPACE FOR THE OWNERS LARGE TELEVISION. ADDITIONAL LIVING SPACES ARE ABUNDANT WITH A GAME ROOM LOCATED ON THE FIRST FLOOR, AS WELL AS A FULL MEDIA ROOM UPSTAIRS.

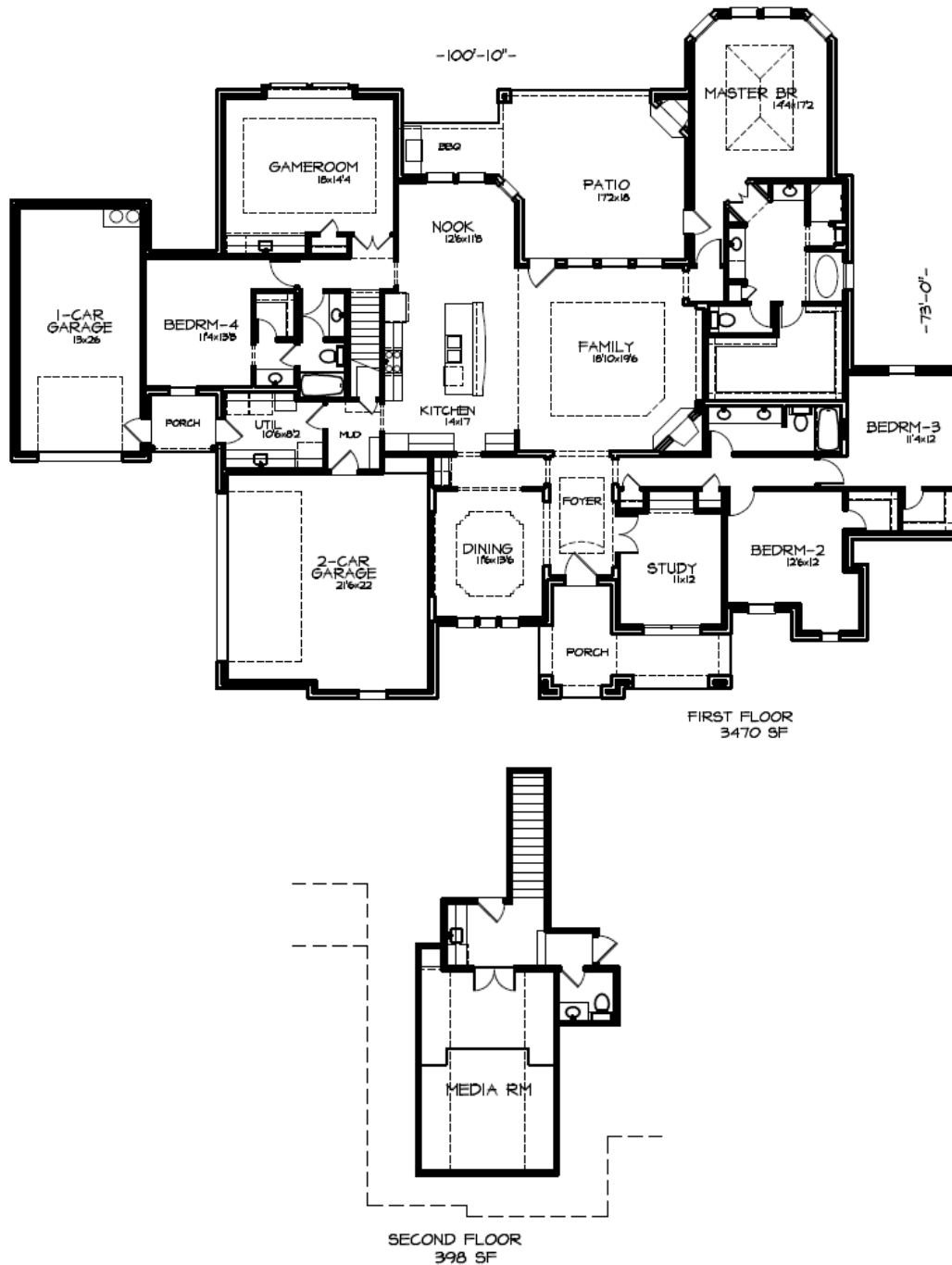
\$469,900

CLAIRE VISTA

PROPERTY FEATURES

- NEW CONSTRUCTION LOCATED ON ONE ACRE LOT
- 3,868 SQUARE FEET WITH OPEN CONCEPT
- 4 BEDROOMS / 3 ½ BATHS / 3 CAR GARAGE
- LARGE DOWNSTAIRS GAME ROOM WITH BAR AREA
- MEDIA ROOM UPSTAIRS WITH BAR AND HALF BATH
- OUTDOOR AREA WITH FIREPLACE AND POTENTIAL GRILL AREA
- LARGE KITCHEN WITH WHIRLPOOL STAINLESS STEEL APPLIANCES AND RAISED BAR AREA FOR DINING
- LARGE FAMILY ROOM WITH RAISED CEILING
- EXQUISITE MASTER SUITE WITH VAULTED CEILING
- EXTENSIVE HARDWOOD FLOORING THROUGHOUT THE HOME
- ENERGY STAR FEATURES SUCH AS RADIANT BARRIER DECKING, WEATHER RESISTANT HOUSE WRAP AND LOW E VINYL WINDOWS AND DOORS
- HOME IS WIRED FOR FULL AUTOMATION INCLUDING AUDIO, VIDEO, SECURITY AND SURROUND SOUND

263 BEARCLAW CIRCLE, ALEDO, TEXAS



KENT McCUNE
PRESIDENT - PEYTON THOMAS HOMES
O: (817) 503-2485 C: (817) 343-0292
EMAIL: KMCCUNE@PEYTONTHOMASHOMES.COM
WEBSITE: WWW.PEYTONTHOMASHOMES.COM



PEYTON THOMAS
HOMES



HOME AND COMMUNITY INFORMATION, INCLUDING PRICING, INCLUDED FEATURES, TERMS, AVAILABILITY AND AMENITIES, ARE SUBJECT TO CHANGE PRIOR TO SALE AT ANY TIME WITHOUT NOTICE OR OBLIGATION. DRAWINGS, PICTURES, PHOTOGRAPHS, SQUARE FOOTAGES, FLOOR PLANS, ELEVATIONS, FEATURES, COLORS AND SIZES ARE APPROXIMATE FOR ILLUSTRATION PURPOSES ONLY AND WILL VARY FROM THE HOME AS BUILT. PLEASE CONSULT A PEYTON THOMAS HOMES REPRESENTATIVE FOR ADDITIONAL INFORMATION, DISCLOSURES AND DISCLAIMERS.