

# PEYTON THOMAS HOMES



FRONT ELEVATION

## 239 BEARCLAW CIRCLE, ALEDO, TEXAS

NEWLY BUILT CUSTOM HOME OFFERED BY PEYTON THOMAS HOMES IN THE CLAIRE VISTA COMMUNITY WITH ACCESS TO THE HIGHLY SOUGHT AFTER ALEDO SCHOOLS. THIS IS A BEAUTIFUL HOME WITH BRICK AND ROCK VENEER, AS WELL AS A LARGE WRAPAROUND FRONT PORCH. HOME ALSO PROVIDES A LARGE DOWNSTAIRS LIVING AREA, AS WELL AS A SEPARATE GAME ROOM UPSTAIRS. ADDITIONAL FEATURES INCLUDE A LARGE KITCHEN ISLAND WITH ABUNDANT SEATING. SEPARATE MASTER SUITE AND A PRIVATE GUEST SUITE. OTHER FEATURES WILL INCLUDE TWO FIREPLACES AND MUD AREA WITH BUILT IN LOCKERS NEAR THE LAUNDRY ROOM.

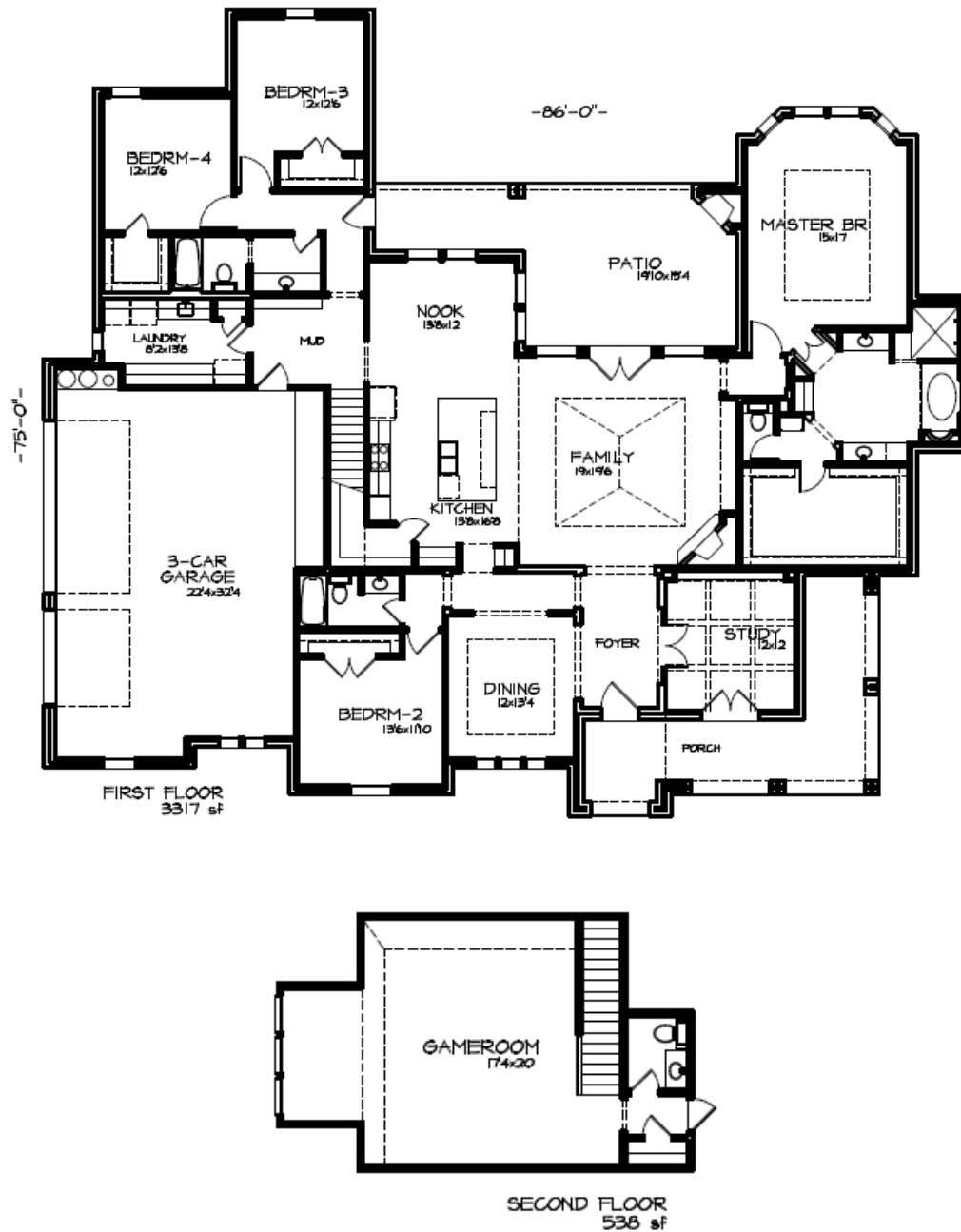
**\$489,900**

**CLAIRE VISTA**

## PROPERTY FEATURES

- NEW CONSTRUCTION LOCATED ON ONE ACRE LOT
- 3,855 SQUARE FEET WITH OPEN CONCEPT
- 4 BEDROOMS / 3 ½ BATHS / 3 CAR GARAGE
- FAMILY ROOM WITH BEAMED CEILING AND ACCESS TO OUTDOOR LIVING AREA
- LARGE KITCHEN WITH WHIRLPOOL STAINLESS STEEL APPLIANCES AND ONE LEVEL BAR AREA FOR DINING
- PRIVATE STUDY WITH BEAMED CEILING AND ACCESS TO OUTDOOR WRAPAROUND PORCH
- LARGE GAME ROOM LOCATED UPSTAIRS
- OUTDOOR AREA WITH WOOD BURNING FIREPLACE
- EXTENSIVE HARDWOOD FLOORING THROUGHOUT HOME
- ENERGY STAR FEATURES SUCH AS RADIANT BARRIER DECKING, WEATHER RESISTANT HOUSE WRAP AND LOW E VINYL WINDOWS AND DOORS
- HOME IS WIRED FOR FULL AUTOMATION INCLUDING AUDIO, VIDEO, SECURITY AND SURROUND SOUND

## 239 BEARCLAW CIRCLE, ALEDO, TEXAS



**KENT MCCUNE**  
PRESIDENT - PEYTON THOMAS HOMES  
O: (817) 503-2485 C: (817) 343-0292  
EMAIL: KMCCUNE@PEYTHONTHOMASHOMES.COM  
WEBSITE: WWW.PEYTHONTHOMASHOMES.COM



**PEYTON THOMAS**  
HOMES



HOME AND COMMUNITY INFORMATION, INCLUDING PRICING, INCLUDED FEATURES, TERMS, AVAILABILITY AND AMENITIES, ARE SUBJECT TO CHANGE PRIOR TO SALE AT ANY TIME WITHOUT NOTICE OR OBLIGATION. DRAWINGS, PICTURES, PHOTOGRAPHS, SQUARE FOOTAGES, FLOOR PLANS, ELEVATIONS, FEATURES, COLORS AND SIZES ARE APPROXIMATE FOR ILLUSTRATION PURPOSES ONLY AND WILL VARY FROM THE HOME AS BUILT. PLEASE CONSULT A PEYTON THOMAS HOMES REPRESENTATIVE FOR ADDITIONAL INFORMATION, DISCLOSURES AND DISCLAIMERS.