

PEYTON THOMAS HOMES



333 BEARCLAW CIRCLE, ALEDO, TEXAS

NEWLY BUILT CUSTOM HOME OFFERED BY PEYTON THOMAS HOMES IN THE CLAIRE VISTA COMMUNITY WITH ACCESS TO THE HIGHLY SOUGHT AFTER ALEDO SCHOOLS. EXQUISITE FRENCH HOME WITH BRICK AND ROCK VENEER. THIS HOME PROVIDES A SEPARATE MASTER SUITE, AS WELL AS A PRIVATE GUEST SUITE. OTHER LIVING AREAS INCLUDE A LARGE FAMILY ROOM, KITCHEN, OVERSIZED BREAKFAST NOOK AND GAME ROOM. ADDITIONAL SPACES INCLUDE A MUD AREA AND MOM'S DESK.

\$449,900

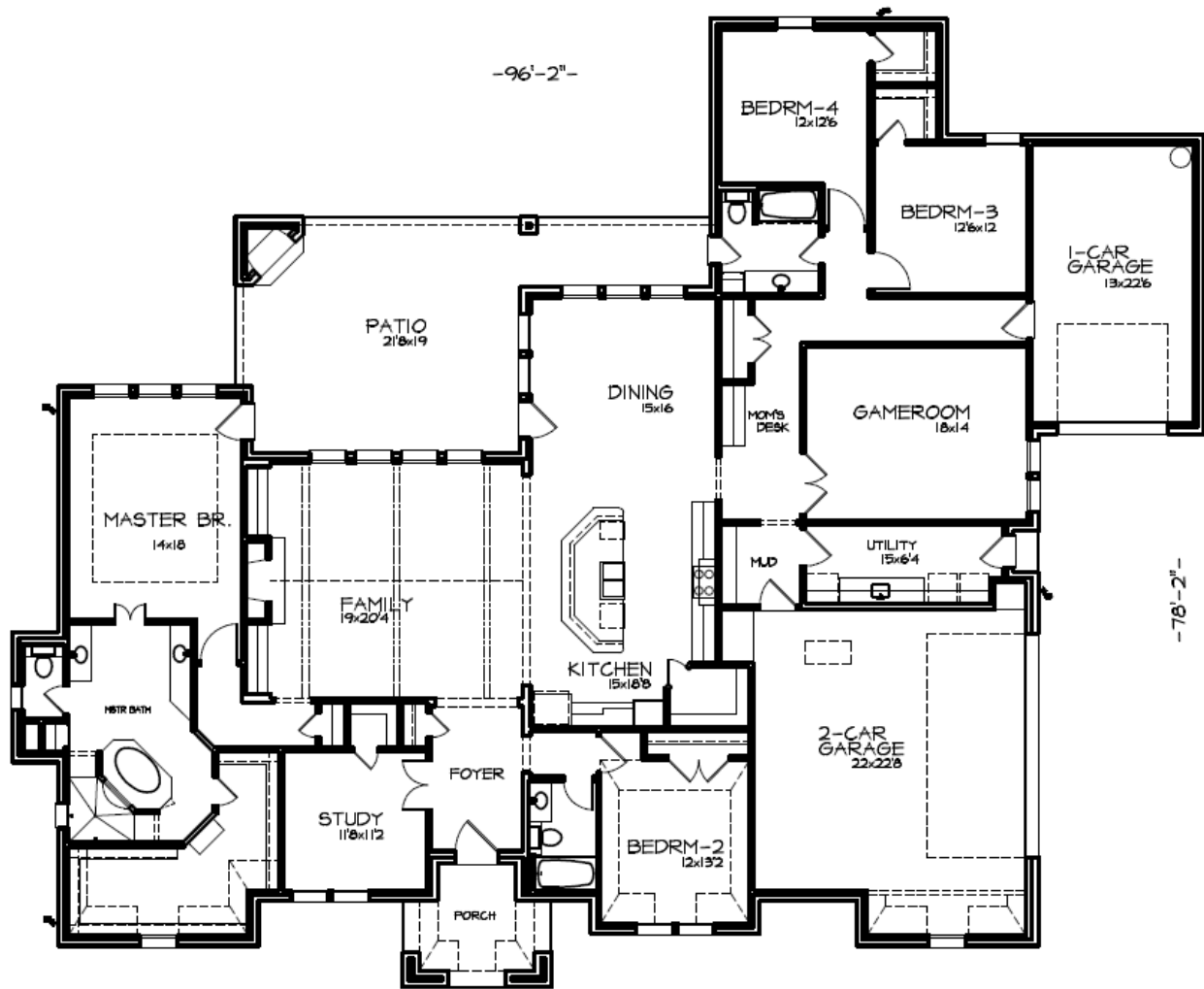
CLAIRE VISTA

PROPERTY FEATURES

- NEW CONSTRUCTION LOCATED ON ONE ACRE LOT
- 3,545 SQUARE FEET WITH OPEN CONCEPT
- 4 BEDROOMS / 3 BATHS / 3 CAR GARAGE
- LARGE GAME ROOM LOCATED DOWNSTAIRS
- OUTDOOR AREA WITH WOOD BURNING FIREPLACE
- LARGE KITCHEN WITH WHIRLPOOL STAINLESS STEEL APPLIANCES AND ONE LEVEL BAR AREA FOR DINING
- LARGE FAMILY ROOM WITH BEAMED CEILING
- EXQUISITE MASTER SUITE WITH VAULTED CEILING
- EXTENSIVE HARDWOOD FLOORING THROUGHOUT HOME
- ENERGY STAR FEATURES SUCH AS RADIANT BARRIER DECKING, WEATHER RESISTANT HOUSE WRAP AND LOW E VINYL WINDOWS AND DOORS
- HOME IS WIRED FOR FULL AUTOMATION INCLUDING AUDIO, VIDEO, SECURITY AND SURROUND SOUND

WWW.PEYTONTHOMASHOMES.COM

333 BEARCLAW CIRCLE, ALEDO, TEXAS



FLOOR PLAN
3545 sf

KENT McCUNE
PRESIDENT - PEYTON THOMAS HOMES
O: (817) 503-2485 C: (817) 343-0292
EMAIL: KMCCUNE@PEYTONTHOMASHOMES.COM
WEBSITE: WWW.PEYTONTHOMASHOMES.COM



PEYTON THOMAS
HOMES



HOME AND COMMUNITY INFORMATION, INCLUDING PRICING, INCLUDED FEATURES, TERMS, AVAILABILITY AND AMENITIES, ARE SUBJECT TO CHANGE PRIOR TO SALE AT ANY TIME WITHOUT NOTICE OR OBLIGATION. DRAWINGS, PICTURES, PHOTOGRAPHS, SQUARE FOOTAGES, FLOOR PLANS, ELEVATIONS, FEATURES, COLORS AND SIZES ARE APPROXIMATE FOR ILLUSTRATION PURPOSES ONLY AND WILL VARY FROM THE HOME AS BUILT. PLEASE CONSULT A PEYTON THOMAS HOMES REPRESENTATIVE FOR ADDITIONAL INFORMATION, DISCLOSURES AND DISCLAIMERS.